



www.escpvcsheetpiling.com

ESC VINYL SHEET PILES

2025 Edition

Flood Control | Water Control | Marine Structures | Containment & Cut-off System



DOWNLOAD OUR
APP 'ESC GROUP'

ESC VINYL SHEET PILES

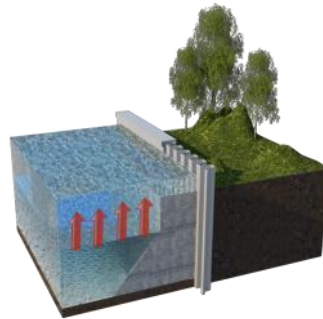
INTRODUCTION

ESC Vinyl Sheet Piles also known as PVC Sheet Piles are a modern alternative for your project. They offer a lower cost than steel, wood or concrete alternatives. The ESC Vinyl Sheet Pile is a strong, light-weight, UV and impact resistant product. The product is inert does not rust, corrode or crack. The ESC Vinyl Sheet Pile retains its structural integrity for decades.

APPLICATIONS

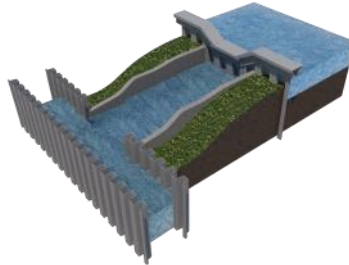
Flood Control

ESC Vinyl PVC Sheet Piles can be utilized for flood protection structures such as Flood Walls or Levees, Stabilization of Dams, Protection of Piping.



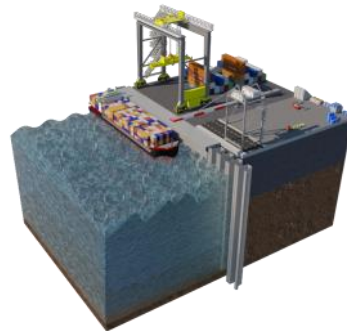
Water Control

ESC Vinyl PVC Sheet Piles can be utilized for water control structures that function by altering the flow of water in a pond, drainage channel or stream.



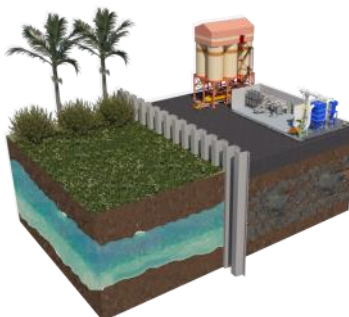
Marine Structures

ESC Vinyl PVC Sheet Piles provide an excellent option for a long lasting seawall due to their superior corrosion resistance, aesthetic finish and lightweight profile for easy handling and installation.



Containment & Cutoff Systems

ESC Vinyl Sheet Piles are frequently the optimal solution for fluid containment projects as they are made of an inert material that can exhibit superior chemical resistance and water corrosion resistance. The interlocks of the sheet pile can be coextruded with a sealing membrane that further improves cut-off performance. Alternatively, a hydrophilic sealant can be applied for swelling in contact with water.

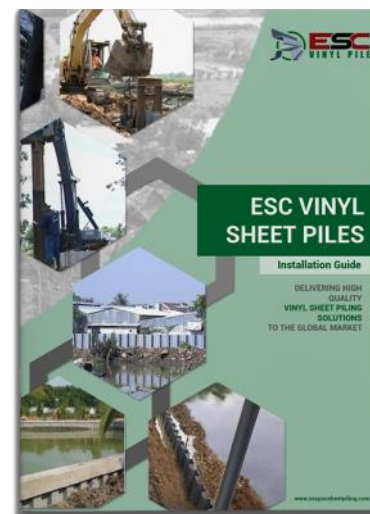


ADVANTAGES

- ✓ **50+ year design life** - Due to its superior corrosion resistance, ESC Vinyl Sheet Piles can be installed with confidence in their structural integrity and appearance even after 50 years
- ✓ **Cost Efficiency** - both from installation and long term cost savings due to superior corrosion resistance and lower price per unit metre material
- ✓ **UV Resistance** - The PVC material is engineered with special compounds for resistance to harmful ultraviolet rays
- ✓ **No toxic coatings** - No coatings are required, which may be detrimental to the environment
- ✓ **Not Affected by Marine Borers** - Small mollusks or crustaceans in the ocean can cause devastating effects over a period of time to traditional timber piling. Vinyl Sheet Piling offers an attractive alternative that is unaffected by these organisms.
- ✓ **Easy Installation** - Compared to steel sheet piles, vinyl sheet piles can be up to 40 times lighter per square meter making it much easier to handle. Driving can also be completed under certain conditions by pressing down with an excavator or a impact vibrohammer.

INSTALLATION GUIDELINES

Please refer to our informative Installation Guidelines manual which can be download from the ESC website for detailed and easy to understand descriptions for safe and effective vinyl sheet pile installation.



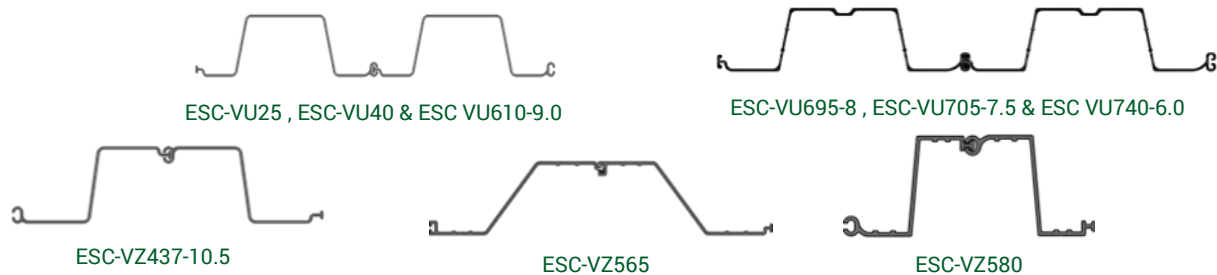
COMPARISON TO OTHER MATERIALS

	Vinyl (PVC)	Steel	Concrete	Wood
Cost	Low	High	Medium	Low
Weight	Light	Heavy	Very Heavy	Medium
Resistance to Corrosion	High	Low	N/A	N/A
Resistance to Chemicals & Sea Water	High	Low	High	Low
Resistance to Cracking & Spalling	High	High	Medium	N/A
Environmentally Friendly	Yes	Yes	No	No
Aesthetics	High	Low	Medium	Medium
Installation	Easy*	Easy	Difficult	Moderat
Design Flexibility	High	High	Moderate	High

TEST STANDARDS

	ASTM	ISO	Min. Value/Range
Density		ISO 1183-3	1400-1480kg/m ³
Flexural Strength	ASTM D790	ISO 178	66MPa
Shore Durometer		ISO 868	75 Shore D
Modulus of Elasticity	ASTM D638	ISO 178/527-2	2.62GPa
Tensile Strength	ASTM D638		44MPa
Izod Impact Strength	ASTM D256		9kJ/m ²
Charpy Impact Strength		ISO 179-1	30kJ/m ²
Vicat Softening Temp.	ASTM D648	ISO 306	77°C

PROFILE RANGE



Section	Width	Height	Thickness	Weight		Elastic Section Modulus	Moment of Inertia	Allowable Bending Moment	Maximum Bending Moment
	(w) mm	(h) mm	(t) mm	Per Pile kg/m	Per Wall kg/m ²				
ESC-VU25	500	160	6.0	7.2	14.4	502	4,013	10.3	20.6
ESC-VU40	600	230	7.5	11.1	18.5	920	10,574	18.8	37.6
ESC-VZ437-10.5	437	254	10.5	11.6	26.5	1,480	19,300	32.6	65.1
ESC-VU610-9.0	610	230	9.0	13.2	21.6	1,086	12,478	23.9	47.8
ESC-VU695-8	695	180	8.0	14.6	20.9	717	6,961	15.1	30.1
ESC-VU695-9	695	180	9.0	16.5	23.7	792	7,740	16.6	33.3
ESC-VU695-11	695	180	11.0	19.2	27.6	932	8,863	19.6	39.1
ESC-VU705-7.5	705	180	7.5	12.4	17.6	682	6,420	13.6	34.1
ESC-VU740-6	740	180	6.0	11.1	15.0	548	5,465	11.5	23.0
ESC-VZ565-9.0	565	245	9.0	15.3	27.1	1,042	12,768	22.9	45.8
ESC-VZ580-7.0	290	240	7.0	6.1	21.0	1,228	15,429	27.0	54.0
ESC-VZ580-9.0	290	240	9.0	6.5	22.4	1,462	18,739	32.2	64.3
ESC-VZ580-11.0	290	240	11.0	7.9	27.2	1,711	21,851	37.6	75.3

PILE CAP



Type	G2	
Length	mm	288
Length 1	mm	258
Height	mm	85
Thickness	mm	6
Tensile Strength	MPa	40
Bending Strength	MPa	290

JUNCTION/CORNER CONNECTION



TA 75*50*6

TA 84*60*8

TA 94*70*10N



TC 106*68*6

TC 120*78*8

TC 134*88*10

COLOUR OPTIONS



GREY (STANDARD)



OLIVE GREEN OR BROWN



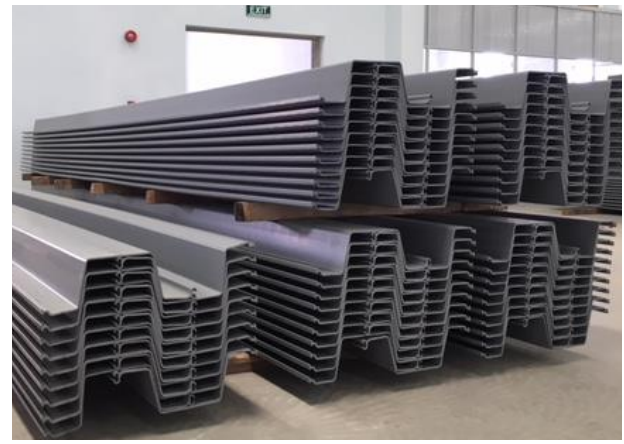
ANY COLOUR (SUBJECT TO

ACCESSORIES

- ✓ Sheet Pile Cap
- ✓ Ground Anchor
- ✓ Tie Rods
- ✓ Bumper Fender
- ✓ Installation Mandrel
- ✓ Driving Cap



PHOTOS





ESC GLOBAL CONTACT LIST

CONTACT DETAILS

Australia, New Zealand & PNG

ESC Asia Limited
A Acclime Offices, 17/F United Centre, 95 Queensway Admiralty Hong Kong
E escglobal@escpile.com
T +852 8198 2349
W www.escpile.com

Argentina, Paraguay & Uruguay

Cimtronic Design & Engineering
A Vedia 144, 5th Floor, Office 2 (C1429EIB) Nuñez CABA, Argentina
E informes@cimtronic.com.ar
E fgallo@cimtronic.com.ar
T +55 (31) 99976 4714
W www.escpile.com.br

Indonesia

PT ESC Steel Indonesia
A Graha Mustika Ratu, 5th Floor #505, Jln. Jend Gatot Subroto Kav. 74-75, Jakarta 12870
E zulfan@escpile.com
E chanhonkit@escpile.com
T +62 811 980 376
T +62 821 247 99 468

China

ESC Trading (Shanghai) Co., Ltd.
A Rm 02, 5/F, No. 16, Gopher Qibao T2 Building, Lane 399, Xinlong Rd., Minhang District, Shanghai, China
E vincenthuang@escpilechina.com
E brucecolson@escpilechina.com
T +86 21 3126 3501
T +86 21 3126 502

Middle East & Africa

ESC Middle East
A P.O. Box 131355, Industrial Area City of Abu Dhabi, Mussafah, Abu Dhabi, UAE
E escuae@escpileuae.com
E kevinashdown@escpileuae.com
T +971 2550 6188
F +971 2550 6112
W www.escpileuae.com

Malaysia, South East Asia & South Asia

ESC Steel Engineering Sdn Bhd
A F-1-2 Second Floor, Block F Suite 5 Setia Walk, Persiaran Wawasan, Pusat Bandar Puchong 47160 Puchong, Selangor, Malaysia
E chanhonkit@escpile.com
T (Malaysia) +6012 428 5759
W www.escsteel.com.my

Mexico, Central & South America

Acerlum ESC SAPI de CV
A Loma de la Cañada No. 4, Loma, Querétaro, México CP 76060
E info@acerlum-esc.com
T +52 442 4711 500
W www.acerlum-esc.com

Philippines

ESC Steel Philippines, Inc.
A 12V 12/F Cyber One Building, 11 Eastwood Avenue, Eastwood City Cyberpark, Bagumbayan, Quezon City, Philippines
E manila@escsteelphil.com
E cebu@escsteelphil.com
T +632 8526 8839
M +63 920 504 3801

Netherlands

Europile B.V.
A Dam Bustersstraat 7 NL 4651 Sj Steenberghe Netherlands
E info@europile.nl
E esceuro@escpile.com
T +31 167 534 747
F +31 167 534 850
W www.europile.com

Nigeria

ESC Nigeria Ltd
A No.72, Apt 5, Lome Crescent, Wuse Zone 7, Abuja, Nigeria
E escnigeria@escpile.com
E bulkplus@gmail.com
T +234 7050 8888 22
F +234 8067 3905 66

United States & Canada

ESC Steel LLC
Contact: Bruce Colson
A (North Carolina) 20109 Knox Road, Cornelius, 28031, North Carolina, USA
E bruce@escsteel.com
T +1 (704) 654 0321
T +1 (980) 689 4388
T (Canada) +1 (604) 235 1911
F (Canada) +1 (415) 500 9825
W www.escsteel.com

United States & Canada

ESC Steel LLC
Contact: Bruce Colson
A (North Carolina) 2185 Salibury, Statesville, 28677 North Carolina, USA
E bruce@escsteel.com
T +1 (902) 442 0800
T (Canada) +1 (604) 235 1911
F (Canada) +1 (415) 500 9825
W www.escsteel.com



Disclaimer

The information provided within this Catalogue is for general information purposes only, without any warranty. ESC shall not be held responsible for any errors, omissions or misuse of any of the information provided. ESC disclaims any and all liability resulting from the ability or inability to use the information within this document. Anyone using the information contained does so at their own risk. ESC shall not be held liable for any damages which includes any financial losses or incidental or consequential damages arising from the use of this information. The product range contained is liable to change without notice.



ESC Global Headquarters

A Acclime Offices


17/F United Centre

95 Queensway Admiralty


New Territories, Hong Kong

E escglobal@escpile.com


T +852 8198 2349

 /escglobalgroup

 @escpilesteel

 /company/esc-global-group

 ESC Group

 www.escpvcsheetpiling.com



Download on the
App Store

ANDROID APP ON
Google play

DOWNLOAD
THE ESC GROUP APP

