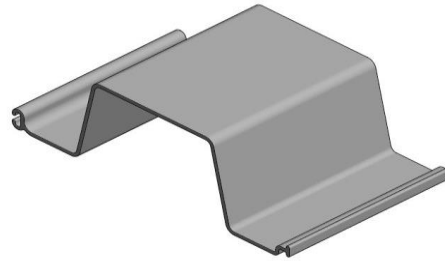
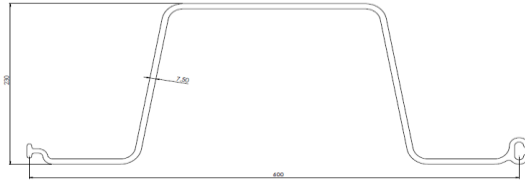


# ESC VINYL SHEET PILING

ESC-VU40

GLOBAL  
PILING  
SOLUTIONS



ESC VINYL SHEET PILE PROFILE  
**ESC-VU40**

## Profile Properties

Section	ESC-VU40			
Unit Width	mm	600	in	23.62
Depth	mm	230	in	9.06
Thickness	mm	7.5	in	0.295
Elastic Section Modulus	cm <sup>3</sup> /m	920	in <sup>3</sup> /ft	17.1
Moment of Inertia	cm <sup>4</sup> /m	10574	in <sup>4</sup> /ft	77.4
Allowable Moment	kNm/m	16.0	ft-lb/ft	3597
Standard Colours	Grey, Other Colours available subject to Minimum Order			
Profile	Omega Profile			

## Material Properties

	ASTM	ISO	Min. Value/Range
Density	-	ISO 1183-3	1400-1480kg/m <sup>3</sup>
Flexural Strength	ASTM D790	ISO 178	66MPa
Shore Durometer	-	ISO 868	75 Shore AD
Modulus of Elasticity	ASTM D638	ISO 178/527-2	2.62GPa
Tensile Strength	ASTM D638	-	44MPa
Izod Impact Strength	ASTM D256	-	9kJ/m <sup>2</sup>
Charpy Impact Strength	-	ISO 179-1	30kJ/m <sup>2</sup>
Vicat Softening Temp.	ASTM D648	ISO 306	77°C

© Copyright—All Rights Reserved ESC Group  
Disclaimer

The information provided within this Guide is for general information purposes only, without any warranty. ESC shall not be held responsible for any errors, omissions or misuse of any of the information provided. ESC disclaims any and all liability resulting from the ability or inability to use the information within this document. Anyone using the information contained does so at their own risk. ESC shall not be held liable for any damages which includes any financial losses or incidental or consequential damages arising from the use of this information. The product range and content contained within is liable to change without notice.

## Get in Touch

+852 3956 1868  
escglobal@escpile.com  
www.escpile.com  
GLOBAL PILING SOLUTIONS

ESC App available now  
Scan QR Code or search for  
"ESC Group" or click on the  
links below

