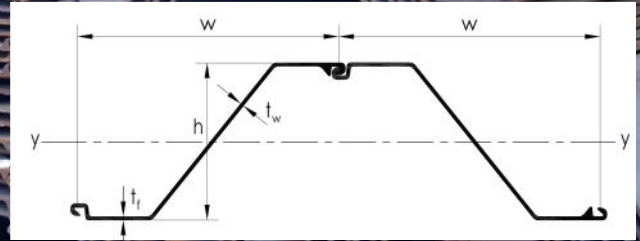
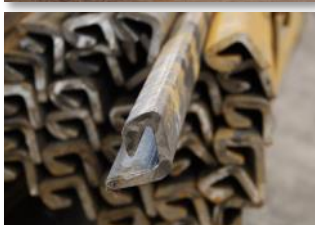
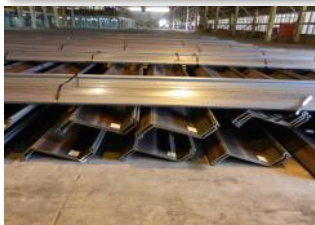


# ESC-HRZ SERIES

## HOT ROLLED SHEET PILES



ESC is proud to present the new Hot Rolled ESC-HRZ Profile Sheet Piles. The design features interlocks that are located symmetrically on both sides of the neutral axis. The web is continuous, thus the section modulus and shear load transfer are optimized. The ESC-HRZ sheet pile features a durable interlock that provides effective water tightness capabilities. The profile design has a very competitive strength to weight ratio. Due to a deep profile, the design features a higher inertia resulting in reduced deflection. This higher inertia offers the ability to choose higher steel grades (60ksi or up to 430Mpa) for the most economical solution that meets serviceability requirements. The piles are usually shipped in pairs to accommodate faster installation and better alignment. The ESC-HRZ Sheet Piles conform to both BS EN 10248/10249 and/or ASTM A6.



| Section       | Width      | Height     | Thickness                |                       | Cross Sectional Area | Weight       |                    | Elastic Section Modulus | Moment of Inertia   | Coating Area (both side per pile) |
|---------------|------------|------------|--------------------------|-----------------------|----------------------|--------------|--------------------|-------------------------|---------------------|-----------------------------------|
|               | (w)        | (h)        | Flange (t <sub>f</sub> ) | Web (t <sub>w</sub> ) |                      | Per Pile     | Per Wall           |                         |                     |                                   |
|               | in         | in         | in                       | in                    |                      | lb/ft        | lb/ft <sup>2</sup> |                         |                     |                                   |
|               | mm         | mm         | mm                       | mm                    | cm <sup>2</sup> /m   | kg/m         | kg/m <sup>2</sup>  | in <sup>3</sup> /ft     | in <sup>4</sup> /ft | ft <sup>2</sup> /ft               |
| ESC-HRZ12-770 | 30.338     | 13.554     | 0.335                    | 0.335                 | 14.42                | 48.9         | 19.4               | 23                      | 157                 | 6.43                              |
|               | <b>770</b> | <b>344</b> | <b>8.5</b>               | <b>8.5</b>            | <b>93</b>            | <b>72.8</b>  | <b>94.5</b>        | <b>1,250</b>            | <b>31,300</b>       | <b>1.68</b>                       |
| ESC-HRZ13-770 | 30.338     | 13.554     | 0.355                    | 0.355                 | 15.1                 | 51.2         | 20.3               | 24                      | 164                 | 6.43                              |
|               | <b>770</b> | <b>344</b> | <b>9</b>                 | <b>9</b>              | <b>97.4</b>          | <b>76.2</b>  | <b>99</b>          | <b>1,300</b>            | <b>22,430</b>       | <b>1.96</b>                       |
| ESC-HRZ14-770 | 30.338     | 13.593     | 0.374                    | 0.374                 | 15.78                | 53.5         | 21.2               | 25                      | 171                 | 6.43                              |
|               | <b>770</b> | <b>345</b> | <b>9.5</b>               | <b>9.5</b>            | <b>101.8</b>         | <b>79.6</b>  | <b>103.4</b>       | <b>1,360</b>            | <b>23,370</b>       | <b>1.96</b>                       |
| ESC-HRZ17-700 | 27.58      | 16.548     | 0.335                    | 0.335                 | 14.42                | 49.3         | 21.4               | 32                      | 266                 | 6.46                              |
|               | <b>700</b> | <b>420</b> | <b>8.5</b>               | <b>8.5</b>            | <b>93</b>            | <b>73.3</b>  | <b>104.7</b>       | <b>1,740</b>            | <b>36,430</b>       | <b>1.97</b>                       |
| ESC-HRZ18-700 | 27.58      | 16.587     | 0.355                    | 0.355                 | 15.1                 | 51.5         | 22.4               | 34                      | 277                 | 6.46                              |
|               | <b>700</b> | <b>421</b> | <b>9</b>                 | <b>9</b>              | <b>97.4</b>          | <b>76.7</b>  | <b>109.6</b>       | <b>1,810</b>            | <b>38,000</b>       | <b>1.97</b>                       |
| ESC-HRZ19-700 | 27.58      | 16.587     | 0.374                    | 0.374                 | 15.78                | 53.9         | 23.5               | 35                      | 289                 | 6.46                              |
|               | <b>700</b> | <b>421</b> | <b>9.5</b>               | <b>9.5</b>            | <b>101.8</b>         | <b>80.2</b>  | <b>114.6</b>       | <b>1,880</b>            | <b>39,580</b>       | <b>1.97</b>                       |
| ESC-HRZ20-700 | 27.58      | 16.627     | 0.394                    | 0.394                 | 16.46                | 56.2         | 24.5               | 36                      | 300                 | 6.46                              |
|               | <b>700</b> | <b>422</b> | <b>10</b>                | <b>10</b>             | <b>106.2</b>         | <b>83.7</b>  | <b>119.5</b>       | <b>1,950</b>            | <b>41,160</b>       | <b>1.97</b>                       |
| ESC-HRZ24-700 | 27.58      | 18.085     | 0.441                    | 0.441                 | 18.93                | 64.4         | 28                 | 45                      | 408                 | 6.73                              |
|               | <b>700</b> | <b>459</b> | <b>11.2</b>              | <b>11.2</b>           | <b>122.1</b>         | <b>95.8</b>  | <b>136.9</b>       | <b>2,440</b>            | <b>55,950</b>       | <b>2.05</b>                       |
| ESC-HRZ26-700 | 27.58      | 18.124     | 0.481                    | 0.481                 | 20.34                | 69.2         | 30.1               | 48                      | 437                 | 6.73                              |
|               | <b>700</b> | <b>460</b> | <b>12.2</b>              | <b>12.2</b>           | <b>131.2</b>         | <b>103</b>   | <b>147.1</b>       | <b>2,600</b>            | <b>59,840</b>       | <b>2.05</b>                       |
| ESC-HRZ27-700 | 27.58      | 18.163     | 0.5                      | 0.5                   | 21                   | 71.5         | 31.1               | 50                      | 450                 | 6.73                              |
|               | <b>700</b> | <b>461</b> | <b>12.7</b>              | <b>12.7</b>           | <b>135.5</b>         | <b>106.4</b> | <b>152</b>         | <b>2,680</b>            | <b>61,640</b>       | <b>2.05</b>                       |
| ESC-HRZ28-700 | 27.58      | 18.163     | 0.52                     | 0.52                  | 21.75                | 74           | 32.2               | 51                      | 465                 | 6.73                              |
|               | <b>700</b> | <b>461</b> | <b>13.2</b>              | <b>13.2</b>           | <b>140.3</b>         | <b>110.1</b> | <b>157.3</b>       | <b>2,760</b>            | <b>63,740</b>       | <b>2.05</b>                       |
| ESC-HRZ36-700 | 27.58      | 19.661     | 0.591                    | 0.441                 | 123.45               | 79.8         | 34.7               | 67                      | 655                 | 7.15                              |
|               | <b>700</b> | <b>499</b> | <b>15</b>                | <b>11.2</b>           | <b>151.3</b>         | <b>118.7</b> | <b>169.6</b>       | <b>3,600</b>            | <b>89,750</b>       | <b>2.18</b>                       |
| ESC-HRZ38-700 | 27.58      | 19.7       | 0.63                     | 0.481                 | 24.99                | 85           | 37                 | 71                      | 693                 | 7.15                              |
|               | <b>700</b> | <b>500</b> | <b>16</b>                | <b>12.2</b>           | <b>161.2</b>         | <b>126.5</b> | <b>180.7</b>       | <b>3,800</b>            | <b>94,980</b>       | <b>2.18</b>                       |
| ESC-HRZ40-700 | 27.58      | 19.739     | 0.67                     | 0.52                  | 26.52                | 90.2         | 39.3               | 74                      | 732                 | 7.15                              |
|               | <b>700</b> | <b>501</b> | <b>17</b>                | <b>13.2</b>           | <b>171.1</b>         | <b>134.3</b> | <b>191.8</b>       | <b>4,000</b>            | <b>100,220</b>      | <b>2.18</b>                       |
| ESC-HRZ42-700 | 27.58      | 19.661     | 0.709                    | 0.552                 | 28.23                | 96.1         | 41.8               | 79                      | 770                 | 7.12                              |
|               | <b>700</b> | <b>499</b> | <b>18</b>                | <b>14</b>             | <b>182.1</b>         | <b>143</b>   | <b>204.2</b>       | <b>4,230</b>            | <b>105,540</b>      | <b>2.17</b>                       |
| ESC-HRZ44-700 | 27.58      | 19.7       | 0.749                    | 0.591                 | 29.76                | 101.3        | 44.1               | 83                      | 810                 | 7.12                              |
|               | <b>700</b> | <b>500</b> | <b>19</b>                | <b>15</b>             | <b>192</b>           | <b>150.7</b> | <b>215.3</b>       | <b>4,440</b>            | <b>110,940</b>      | <b>2.17</b>                       |
| ESC-HRZ46-700 | 27.58      | 19.739     | 0.788                    | 0.63                  | 31.29                | 106.5        | 46.4               | 86                      | 848                 | 7.12                              |
|               | <b>700</b> | <b>501</b> | <b>20</b>                | <b>16</b>             | <b>201.9</b>         | <b>158.5</b> | <b>226.5</b>       | <b>4,640</b>            | <b>116,160</b>      | <b>2.17</b>                       |
| ESC-HRZ48-700 | 27.58      | 19.818     | 0.867                    | 0.591                 | 31.47                | 107          | 46.6               | 89                      | 879                 | 7.12                              |
|               | <b>700</b> | <b>503</b> | <b>22</b>                | <b>15</b>             | <b>203</b>           | <b>159.3</b> | <b>227.6</b>       | <b>4,790</b>            | <b>120,470</b>      | <b>2.17</b>                       |
| ESC-HRZ50-700 | 27.58      | 19.858     | 0.906                    | 0.63                  | 32.92                | 112          | 48.8               | 92                      | 915                 | 7.12                              |
|               | <b>700</b> | <b>504</b> | <b>23</b>                | <b>16</b>             | <b>212.4</b>         | <b>166.7</b> | <b>238.2</b>       | <b>4,970</b>            | <b>125,360</b>      | <b>2.17</b>                       |
| ESC-HRZ52-700 | 27.58      | 19.897     | 0.946                    | 0.67                  | 34.43                | 117.1        | 51                 | 96                      | 952                 | 7.12                              |
|               | <b>700</b> | <b>505</b> | <b>24</b>                | <b>17</b>             | <b>222.1</b>         | <b>174.3</b> | <b>249</b>         | <b>5,160</b>            | <b>130,400</b>      | <b>2.17</b>                       |

**Interlock Compatibility** - Compatible with the ESC-9E Hot Rolled Interlock. All HRZ

**Steel Grades** - ASTM A572 Gr.50, Gr.55, Gr.60 & Gr.65

**Delivery Options** - Supplied in singles or paired. Pairs either loose, welded or crimped. Can be supplied with Lifting Hole. Shipping by container (38.7ft or less) or Break Bulk. Corrosion Protection Coatings are an option.

**Length** - 19.7ft to 101.7ft. Can be spliced to greater lengths. Can also be produced to project specific

\*excludes internal section of interlock

### Get in Touch:

T 1-281-205-7261  
E info@escsteel.com  
W www.escsteel.com  
COMPLETE PILING SOLUTIONS

ESC App available now  
Scan QR Code or search for "ESC Group" on AppStore & Google Play



Revision 6, Q3 2019

**Disclaimer** The information provided within this datasheet is for general information purposes only, without any warranty. ESC Steel LLC shall not be held responsible for any errors, omissions or misuse of any of the information provided. ESC Steel LLC disclaims any and all liability resulting from the ability or inability to use the information within this document. Anyone using the information contained does so at their own risk. ESC Steel LLC shall not be held liable for any damages which includes any financial losses or incidental or consequential damages arising from the use of this information. The product range contained is liable to change without notice.